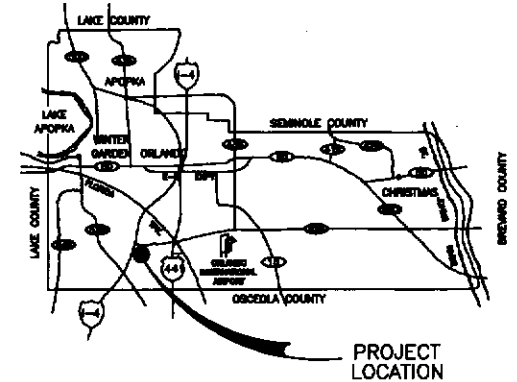




RIGHT OF WAY SURVEY INTERNATIONAL DRIVE

FROM SOUTH WESTWOOD BOULEVARD TO NORTH WESTWOOD BOULEVARD
LYING IN SECTIONS 12 & 13, TOWNSHIP 24 SOUTH, RANGE 28 EAST
& SECTIONS 7 & 18, TOWNSHIP 24 SOUTH, RANGE 29 EAST
DISTRICT NO. 1



GENERAL NOTES

THIS RIGHT-OF-WAY SURVEY WAS MADE FOR THE PURPOSE OF SURVEYING AND MAPPING THE CENTERLINE AND RIGHT-OF-WAY LIMITS OF INTERNATIONAL DRIVE FROM SOUTH WESTWOOD BOULEVARD TO NORTH WESTWOOD BOULEVARD/STATE ROAD NO. 528-BEACHLINE ON-RAMP INTERSECTION. PROPERTY LINES ADJOINING THE RIGHT-OF-WAY WERE CALCULATED BASED ON LAST DEED OF RECORD, AND RECORDED SUBDIVISION PLATS PROVIDED BY ORANGE COUNTY, IN CONJUNCTION WITH PROPERTY CORNERS FOUND ALONG THE EXISTING RIGHT-OF-WAY. THE SURVEY OF ADJOINING SUBDIVISION BLOCKS AND ADJOINING PARENT TRACTS WAS NOT PERFORMED.

ALL RECORDED PLATS, OFFICIAL RECORD BOOKS AND DEED BOOKS REFERENCED HEREON ARE FOUND IN THE PUBLIC RECORDS OF ORANGE COUNTY, FLORIDA.

THE SURVEYOR HAS NOT ABSTRACTED THE LANDS SHOWN HEREON FOR EASEMENTS AND/OR RIGHT-OF-WAY RECORDS. THIS SURVEY WAS PREPARED WITHOUT BENEFIT OF A TITLE REPORT.

BEARINGS AND COORDINATES ARE RELATIVE TO THE FLORIDA STATE PLANE COORDINATE SYSTEM, NORTH AMERICAN DATUM OF 1983/1990 ADJUSTMENT (NAD83/90), EAST ZONE. LISTED BELOW ARE THE ORANGE COUNTY GIS POINTS UTILIZED FOR THE PROJECT:

DESIGNATION: GIS460 - LONGITUDE: 81°27'56.20428" LATITUDE: 28°23'28.66335"
FOUND CONCRETE MONUMENT WITH 3" BRASS DISK "ORANGE COUNTY GEODETIC INFORMATION SYSTEM GIS-0460 RAY DELEON"

DESIGNATION: GIS461 - LONGITUDE: 81°27'28.79319" LATITUDE: 28°23'57.04222"
FOUND CONCRETE MONUMENT WITH 3" BRASS DISK "ORANGE COUNTY GEODETIC INFORMATION SYSTEM GIS-0461 RAY DELEON"

BEARINGS SHOWN HEREON ARE BASED ON THE CENTERLINE OF INTERNATIONAL DRIVE BEING THE FIRST TANGENT LYING NORTH OF THE SOUTH LINE OF THE SOUTHWEST 1/4 OF SECTION 13, TOWNSHIP 24 SOUTH, RANGE 28 EAST, BEING NORTH 41°45'42" EAST.

UNLESS OTHERWISE NOTED, SECTION CORNERS AND SECTION LINES SHOWN HEREON ARE FOR INFORMATIONAL PURPOSES ONLY. SECTION CORNERS NOTED AS "CORNER NOT FOUND" SHOULD NOT BE RE-ESTABLISHED BASED ON THIS MAP.

BEARINGS FROM PLATS AND DEEDS HAVE BEEN ROTATED TO THE PROJECT DATUM. BEARINGS SHOWN ON SAID PLATS AND DEEDS HAVE NOT BEEN SHOWN ON THIS SURVEY.

NO FIXED IMPROVEMENTS, INCLUDING BUT NOT LIMITED TO UNDERGROUND IMPROVEMENTS, HAVE BEEN LOCATED AS PART OF THIS SURVEY.

ELEVATIONS ARE BASED ON NORTH AMERICAN VERTICAL DATUM OF 1988 (NAV88) AS ESTABLISHED FROM ORANGE COUNTY BENCHMARKS.

L1362012 - PUBLISHED ELEVATION = 94.185', SEE SHEET 2 FOR LOCATION AND DESCRIPTION

S1383015 - PUBLISHED ELEVATION = 91.774', SEE SHEET 10 FOR LOCATION AND DESCRIPTION

ALL STATION OFFSETS WERE CALCULATED FROM BASELINE OF SURVEY.

ATTENTION IS DIRECTED TO THE FACT THESE MAPS MAY HAVE BEEN ALTERED IN SIZE BY REPRODUCTION. THIS MUST BE CONSIDERED WHEN OBTAINING SCALED DATA.

THIS SURVEY IS NOT VALID WITHOUT THE SIGNATURE AND ORIGINAL RAISED SEAL OF A FLORIDA SURVEYOR AND MAPPER.

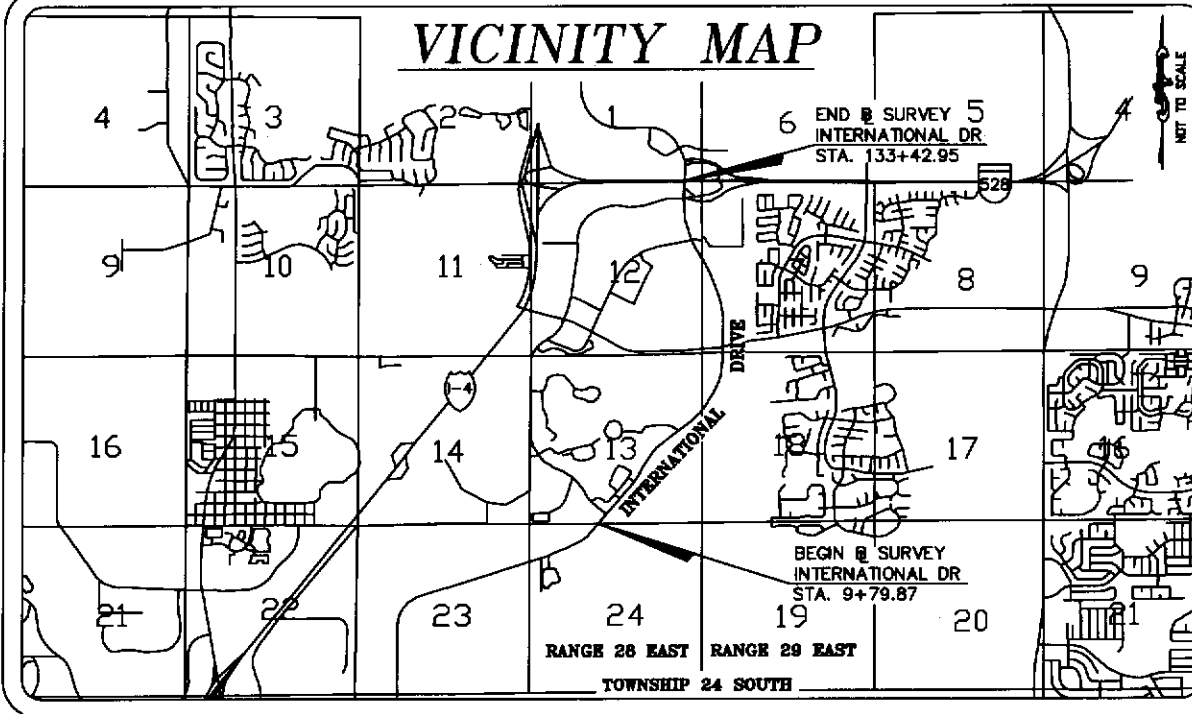
LAST DATE OF FIELD SURVEY: MARCH 5, 2009

THESE MAPS WERE MODIFIED BY BOWYER-SINGLETON AND ASSOCIATES ON MARCH 17, 2011. MODIFICATIONS INCLUDE: ADDED INFORMATION FROM TITLE SEARCHES PREPARED BY FIRST AMERICAN TITLE INSURANCE COMPANY, FILE NO. 10.00042/ FOR PARCELS BR51-15 AND PARCELS 1001-1054 THAT WAS NOT ALREADY SHOWN ON THE MAPS; CORRECTED SCRIBENERS ERRORS ON THE MAPS. NO ADDITIONAL FIELD SURVEY WAS PERFORMED BY BOWYER-SINGLETON AND ASSOCIATES.

BOARD OF COUNTY COMMISSIONERS

THERESA JACOBS	COUNTY MAYOR
S. SCOTT BOYD	DISTRICT 1
FREDERICK BRUMMER	DISTRICT 2
LUI DAMIANI	DISTRICT 3
JENNIFER THOMPSON	DISTRICT 4
TED EDWARDS	DISTRICT 5
TIFFANY MOORE-RUSSELL	DISTRICT 6
MARK V. MASSARO	PUBLIC WORKS DIRECTOR

VICINITY MAP



LEGEND / ABBREVIATIONS

STA.	= STATION	(C)	= CALCULATED DIMENSION	D.B.	= DEED BOOK
RT.	= RIGHT	(D)	= DEED DIMENSION	D.E.	= DRAINAGE EASEMENT
LT.	= LEFT	(F)	= FIELD DIMENSION	EASMT.	= EASEMENT
P.C.	= POINT OF CURVATURE	(P)	= PLAT DIMENSION	FDOT	= FLORIDA DEPARTMENT OF TRANSPORTATION
P.O.C.	= POINT ON CURVE	(R)	= RIGHT-OF-WAY MAP DIMENSION	FL	= PROPERTY LINE
P.I.	= POINT OF INTERSECTION	Δ	= DELTA	U.E.	= UTILITY EASEMENT
P.T.	= POINT OF TANGENCY	R	= RADIUS	UTIL.	= UTILITY
P.O.T.	= POINT ON TANGENT	L	= LENGTH		= EASEMENT CENTERLINE
EXIST.	= EXISTING	T	= TANGENT		
L.A.	= LIMITED ACCESS	CD	= CHORD DISTANCE		
R/W	= RIGHT-OF-WAY	CB	= CHORD BEARING		
BLVD	= BOULEVARD	FND	= FOUND		
DR	= DRIVE	C.M.	= CONCRETE MONUMENT		
PKWY	= PARKWAY	I.R.	= IRON ROD		
P.B.	= PLAT BOOK	I.R.C.	= IRON ROD & CAP		
O.R.B.	= OFFICIAL RECORDS BOOK	I.P.	= IRON PIPE		
PG.	= PAGE	I.P.C.	= IRON PIPE & CAP		
C.C.R.	= CERTIFIED CORNER RECORD	N.D.	= NAIL & DISK		
BM	= BENCHMARK	ID	= IDENTIFICATION		
TBM	= TEMPORARY BENCHMARK	RR	= RAILROAD		
EL.	= ELEVATION	F.P.C.	= FLORIDA POWER CORPORATION		
Q	= BASELINE	T.B.	= TANGENT BEARING		

INDEX OF SHEETS

SHEET	DESCRIPTION
1	COVER SHEET
2-10	DETAIL SHEETS
11-12	REFERENCE SHEETS

SURVEYOR'S CERTIFICATION

I HEREBY CERTIFY THAT A SURVEY OF THE PROPERTY SHOWN HEREON WAS MADE UNDER MY SUPERVISION AND THAT THE SURVEY MEETS THE MINIMUM TECHNICAL STANDARDS AS SET FORTH BY THE FLORIDA BOARD OF PROFESSIONAL SURVEYORS AND MAPPERS IN CHAPTER 61G17-6, FLORIDA ADMINISTRATIVE CODE, PURSUANT TO CHAPTER 472.027 OF THE FLORIDA STATUTES AND THAT THE SKETCH HEREON IS A TRUE AND ACCURATE REPRESENTATION THEREOF TO THE BEST OF MY KNOWLEDGE AND BELIEF. SUBJECT TO NOTES AND NOTATIONS SHOWN

THIS DAY OF 20

H. Paul deVivero, Professional Land Surveyor No. 4990
Land Surveyor Business License No. 6556
VALID ONLY WITH SIGNATURE AND EMBOSSED SEAL

PREPARED FOR:

ORANGE COUNTY PUBLIC WORKS
ENGINEERING DEPARTMENT
(407) 836-7908

RIGHT OF WAY SURVEY

MAPS PREPARED BY: GEODATA CONSULTANTS, INC.
SURVEYING & MAPPING
2700 FEDERAL LANE
SUITE 107
MAYLAND, FLORIDA 32061
PHONE (407) 699-8200 FAX 699-8200

BY	DATE	FIELD BOOK NO'S
DESIGNED	JMS MAR 2009	08-27 & 09-06
DRAWN	JSE MAR 2009	PROJECT NO
CHECKED	HPV MAR 2009	UOS-08

INTERNATIONAL DRIVE

FROM: SOUTH WESTWOOD BOULEVARD

TO: NORTH WESTWOOD BOULEVARD

COVER SHEET DRAFT OF 12

SEE NOTE	BSA	3/17/11
REVISION	BY	DATE

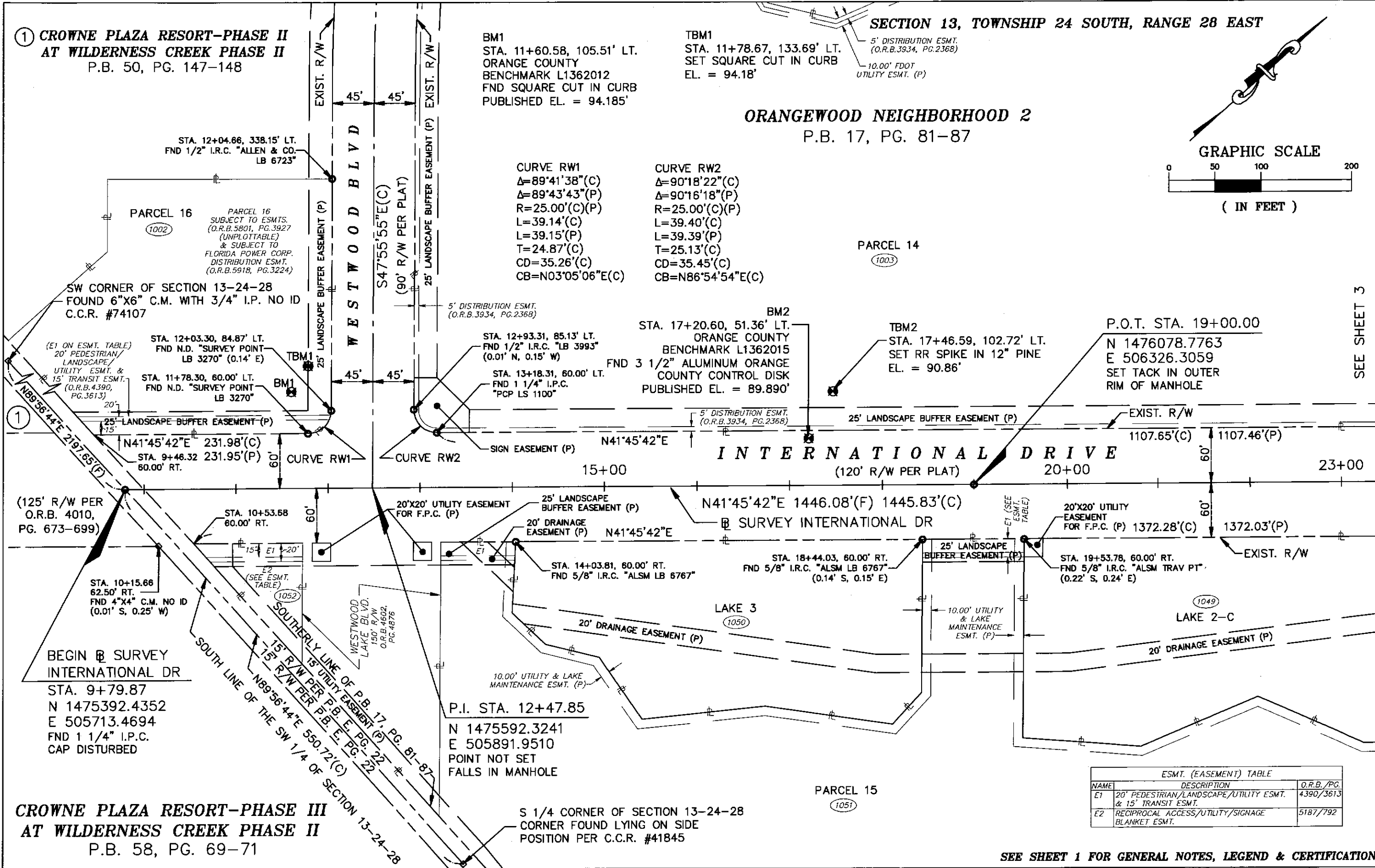
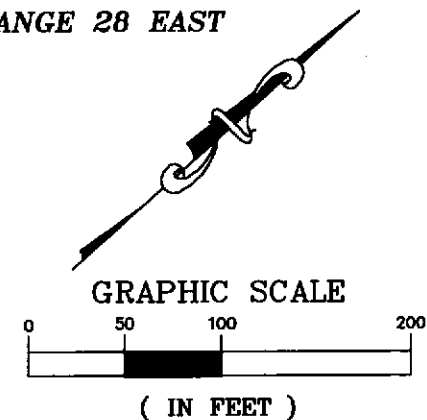
① CROWNE PLAZA RESORT-PHASE II
AT WILDERNESS CREEK PHASE II
P.B. 50, PG. 147-148

BM1
STA. 11+60.58, 105.51' LT.
ORANGE COUNTY
BENCHMARK L1362012
FND SQUARE CUT IN CURB
PUBLISHED EL. = 94.185'

TBM1
STA. 11+78.67, 133.69' LT.
SET SQUARE CUT IN CURB
EL. = 94.18'

SECTION 13, TOWNSHIP 24 SOUTH, RANGE 28 EAST

ORANGEWOOD NEIGHBORHOOD 2
P.B. 17, PG. 81-87



SEE SHEET 3

CROWNE PLAZA RESORT-PHASE III
AT WILDERNESS CREEK PHASE II
P.B. 58, PG. 69-71

S 1/4 CORNER OF SECTION 13-24-28
CORNER FOUND LYING ON SIDE
POSITION PER C.C.R. #41845

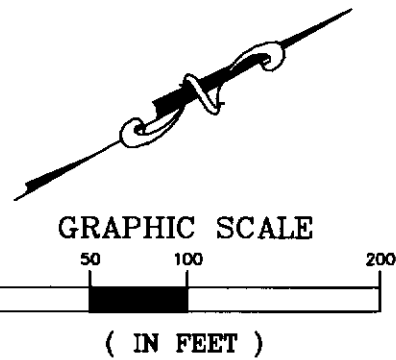
SEE SHEET 1 FOR GENERAL NOTES, LEGEND & CERTIFICATION

RIGHT OF WAY SURVEY OF INTERNATIONAL DRIVE

DETAIL SHEET

REVISION	BY	DATE	GEODATA CONSULTANTS, INC. SURVEYING & MAPPING 7700 WESTGATE LANE SUITE 127 MAYLAND, FLORIDA 32751 PHONE: (407) 980-5588 FAX: 980-5589	DATE: MAR. 23, 2009	SCALE: 1" = 100'
				PROJECT No. 109-01	SHEET 2

DRAFT



TBM3
STA. 23+66.02, 110.64' LT.
SET SQUARE CUT IN SIDEWALK
EL. = 87.98'

ORANGEWOOD NEIGHBORHOOD 2
P.B. 17, PG. 81-87

CURVE RW3
 $\Delta=12^{\circ}00'11''(C)$
 $\Delta=12^{\circ}00'25''(P)$
 $R=1849.86'(C)(P)$
 $L=387.53'(C)$
 $L=387.66'(P)$
 $T=194.48'(C)$
 $CD=386.82'(C)$
 $CB=N35^{\circ}45'37''E(C)$

5' DISTRIBUTION ESMT.
(O.R.B. 3934, PG. 2368)
10.00' UTILITY & LAKE
MAINTENANCE ESMT. (P)

LAKE 7
(1004)

TBM5
STA. 35+71.83, 97.70' LT.
SET RR SPIKE IN 12" MAPLE TREE
EL. = 87.68'

GOLF COURSE
PARCEL 4
(1005)

CURVE RW5
 $\Delta=23^{\circ}07'46''(C)$
 $\Delta=23^{\circ}07'33''(P)$
 $R=1969.86'(C)(P)$
 $L=795.20'(C)$
 $L=795.08'(P)$
 $T=403.09'(C)$
 $CD=789.81'(C)$
 $CB=N41^{\circ}19'24''E(C)$

P.C. STA. 33+30.52

N 1477233.1078
E 507160.3886
SET 5/8" I.R.C.
"GEODATA LB 6556"

TBM5

TBM4
STA. 29+20.54, 83.67' LT.
SET RR SPIKE IN 12" PINE
EL. = 86.76'

STA. 28+26.06, 60.00' LT.
FND 5/8" I.R.C. "LS 3993"
(0.17' S, 0.74' W)

STA. 29+80.12, 60.00' LT.
FND 1/2" I.R.C. "LS 3993"
(0.15' N, 0.28' W)

STA. 33+30.52, 60.00' LT.
FND 1 1/2" I.P.C.
"PCP LS 1100"
(0.14' N, 0.08' E)

INTERNATIONAL DRIVE
30+00 (120' R/W PER PLAT)

N29°45'31"E 504.46'(F) 504.30'(P)
B SURVEY INTERNATIONAL DR
BM3 N29°45'31"E 504.46'(C) 504.30'(P)

EXIST. R/W

STA. 31+85.33, 60.00' RT.
FND 5/8" I.R.C. "ALSM LB 6767"
(0.25' S, 0.40' E)

20'X20' UTILITY
EASEMENT
FOR F.P.C. (P)

STA. 33+30.52, 60.00' RT.
FND 5/8" I.R.C. NO ID
(0.16' N, 0.05' W)

STA. 32+88.93, 60.00' RT.
FND 5/8" I.R.C. "ALSM LB 6767"
(0.22' S, 0.37' E)

LAKE 2-A
(1047)

LAKE 2-B
(1048)

BM3
STA. 29+98.91, 49.72' RT.
ORANGE COUNTY
BENCHMARK L1362018
FND 3 1/2" ALUMINUM ORANGE
COUNTY CONTROL DISK
PUBLISHED EL. = 84.847'

PARCEL 15

CURVE 2
 $\Delta=23^{\circ}07'46''(F)$ $23^{\circ}07'33''(P)$
 $R=1909.86'(F)$ $1909.86'(P)$
 $L=770.97'(F)$ $770.86'(P)$
 $T=390.81'(F)$ $390.75'(P)$
 $CD=765.75'(F)$ $765.64'(P)$
 $CB=N41^{\circ}19'24''E(F)$

CURVE RW6
 $\Delta=23^{\circ}07'46''(C)$
 $\Delta=23^{\circ}07'33''(P)$
 $R=1849.86'(C)(P)$
 $L=746.76'(C)$
 $L=746.64'(P)$
 $T=378.53'(C)$
 $CD=741.69'(C)$
 $CB=N41^{\circ}19'24''E(C)$

CURVE 1
 $\Delta=12^{\circ}00'11''(F)$ $12^{\circ}00'25''(P)$
 $R=1909.86'(F)$ $1909.86'(P)$
 $L=400.11'(F)$ $400.23'(P)$
 $T=200.79'(F)$ $200.85'(P)$
 $CD=399.37'(F)$ $399.50'(P)$
 $CB=N35^{\circ}45'37''E(F)$

CURVE RW4
 $\Delta=12^{\circ}00'11''(C)$
 $\Delta=12^{\circ}00'26''(P)$
 $R=1969.86'(C)(P)$
 $L=412.67'(C)$
 $L=412.80'(P)$
 $T=207.09'(C)$
 $CD=411.92'(C)$
 $CB=N35^{\circ}45'37''E(C)$

RECIPROCAL ACCESS/UTILITY/
SIGNAGE BLANKET ESMT.
(O.R.B. 5187, PG. 792)

ESMT. (EASEMENT) TABLE		
NAME	DESCRIPTION	O.R.B./PG.
E1	20' PEDESTRIAN/LANDSCAPE/UTILITY ESMT. & 15' TRANSIT ESMT.	4.390/3613

SECTION 13, TOWNSHIP 24 SOUTH, RANGE 28 EAST

SEE SHEET 1 FOR GENERAL NOTES, LEGEND & CERTIFICATION

RIGHT OF WAY SURVEY OF INTERNATIONAL DRIVE

DETAIL SHEET

REVISION

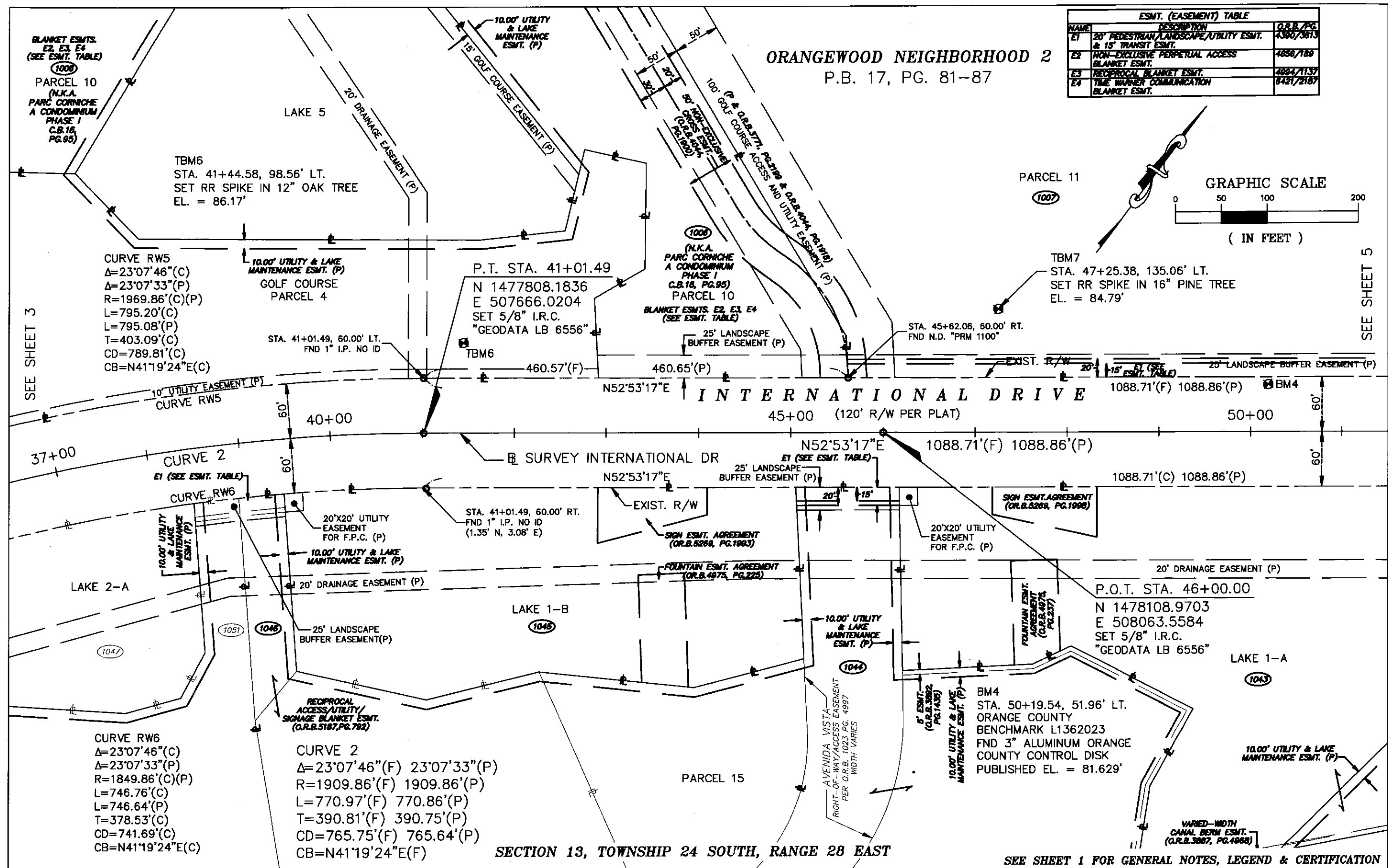
BY

DATE

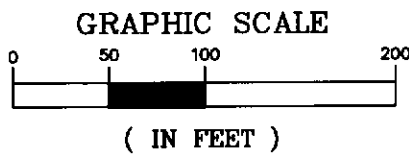
GEODATA CONSULTANTS, INC.
SURVEYING & MAPPING
8700 WESTGATE LANE
SUITE 107
MAYLAND, FLORIDA 32051
PHONE: (407) 980-3388 FAX: 800-688-3388

DATE: MAR. 23, 2009
PROJECT No. 09-02
SHEET 3 OF 1

SCALE: 1" = 100'



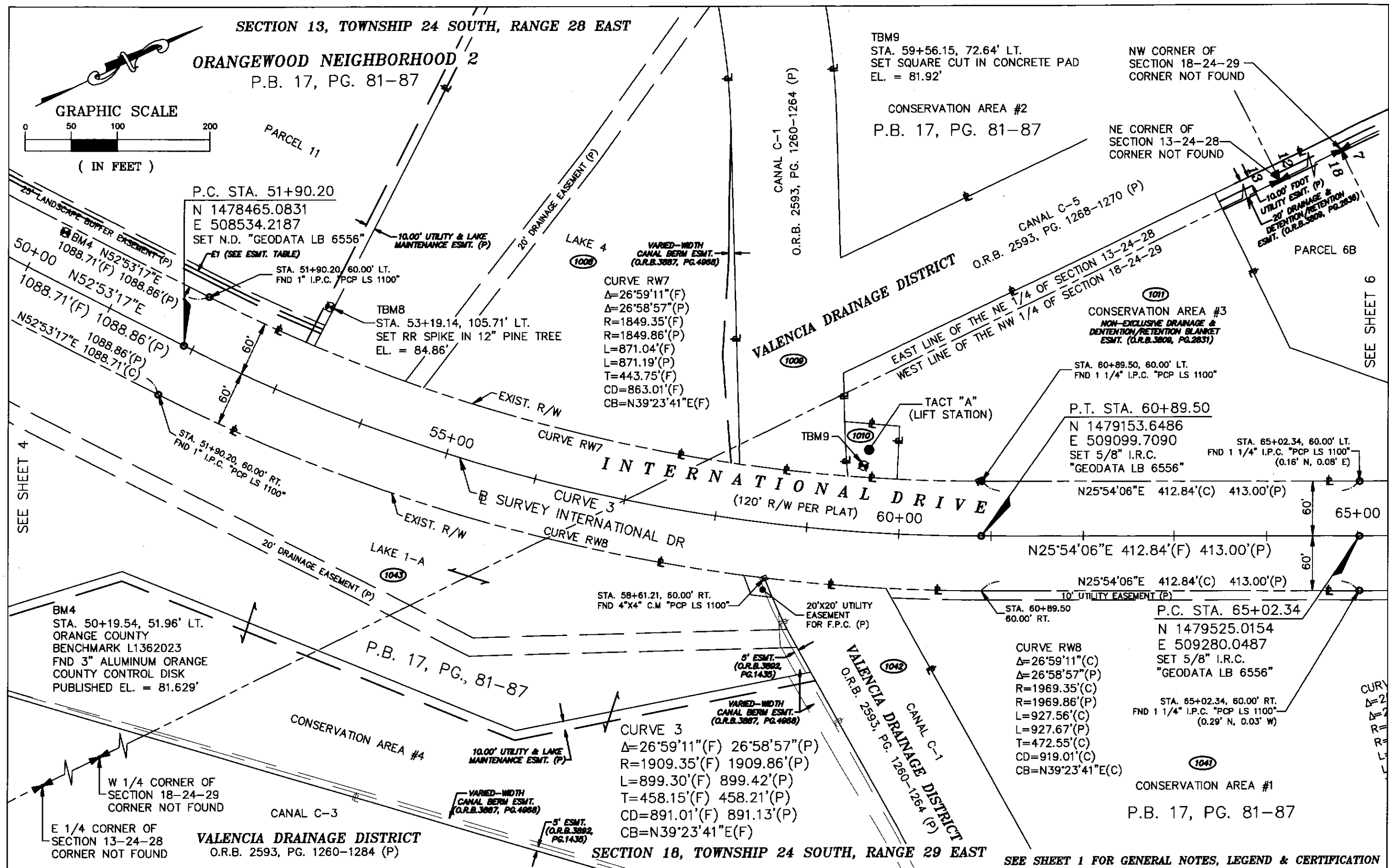
ESMT. (EASEMENT) TABLE		
NAME	DESCRIPTION	O.R.B./PG.
E1	20' PEDESTRIAN/LANDSCAPE/UTILITY ESMT. & 15' TRANSIT ESMT.	4380/3813
E2	NON-EXCLUSIVE PERPETUAL ACCESS BLANKET ESMT.	4858/189
E3	RECIPROCAL BLANKET ESMT.	4864/1137
E4	TIME WARNER COMMUNICATION BLANKET ESMT.	6421/2187

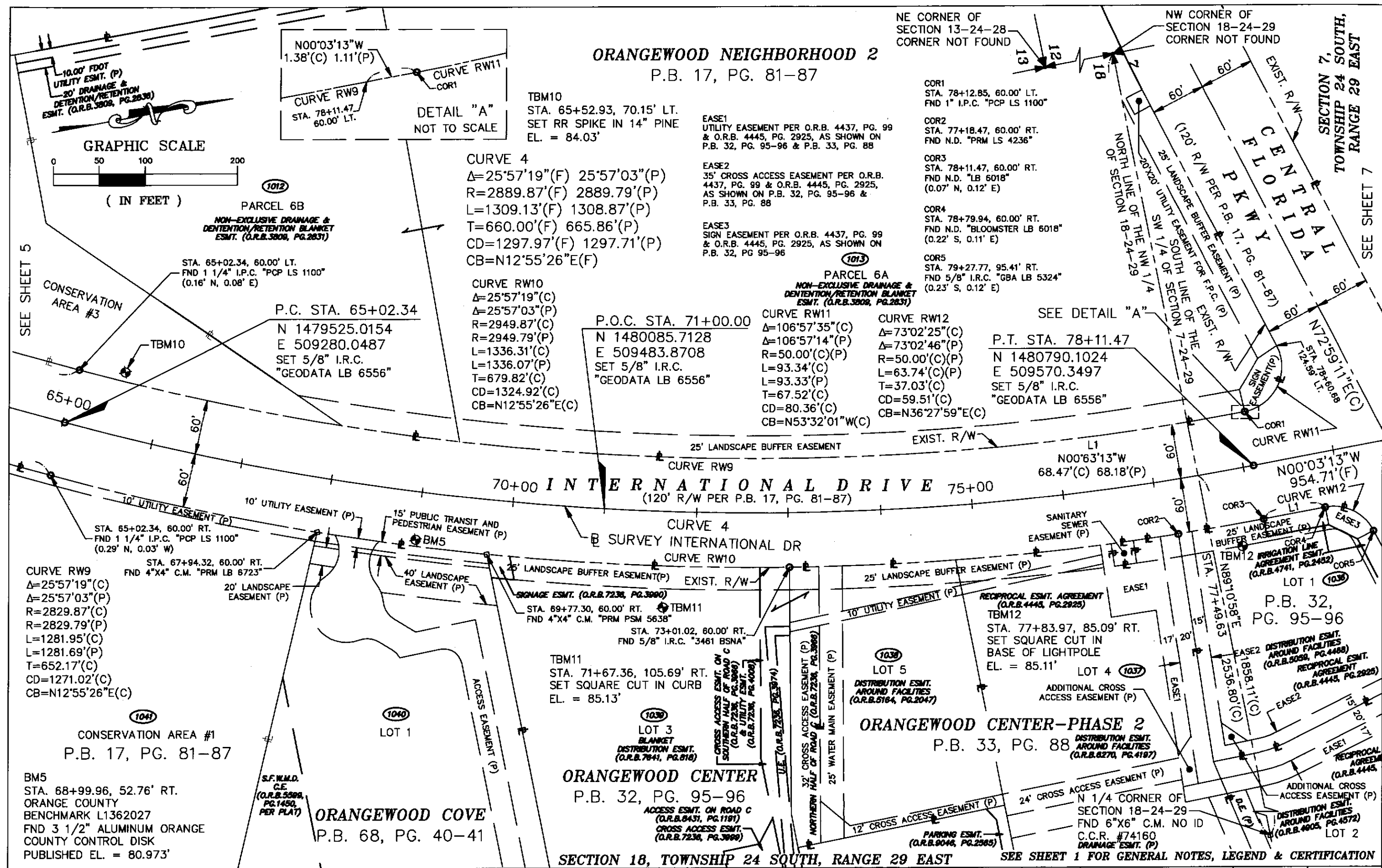


RIGHT OF WAY SURVEY OF INTERNATIONAL DRIVE

DETAIL SHEET

GEODATA CONSULTANTS, INC.			DATE: MAR. 23, 2009	SCALE: 1" = 100'
SURVEYING & MAPPING			PROJECT No.	SHEET 4
7700 VENTNALL LANE			U.S. 02	OF 1
SUITE 157				
MAYLAND, FLORIDA 32151				
PHONE: (407) 980-5288 FAX: 980-5288				
REVISION	BY	DATE		





RIGHT OF WAY SURVEY OF INTERNATIONAL DRIVE

DETAIL SHEET

REVISION

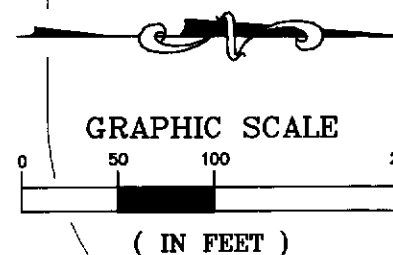
BY

DATE

GEODATA CONSULTANTS, INC.
SURVEYING & MAPPING
8700 VESTAL LANE
SUITE 101
MAITLAND, FLORIDA 32751
PHONE: (407) 898-8282 FAX: (407) 898-8283

DATE: MAR. 23, 2009
SCALE: 1" = 100'
PROJECT No. 09-02
SHEET 6 OF 6

ESMT. (EASEMENT) TABLE		
NAME	DESCRIPTION	O.R.B./PG.
E1	UTILITY & ACCESS ESMT.	9503/437
E2	INGRESS/EGRESS ESMT.	9503/437
E3	SIGN ESMT.	9503/437



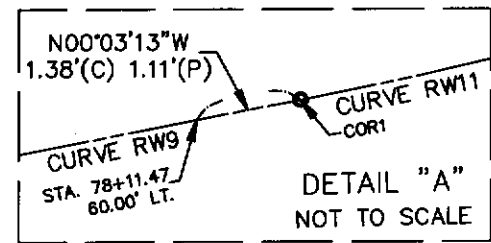
LANDSCAPE ESMT. AGREEMENT (O.R.B. 9627, PG. 4996)

CURVE RW9
 $\Delta=25^{\circ}57'19''(C)$
 $\Delta=25^{\circ}57'03''(P)$
 $R=2829.87'(C)$
 $R=2829.79'(P)$
 $L=1281.95'(C)$
 $L=1281.69'(P)$
 $T=652.17'(C)$
 $CD=1271.02'(C)$
 $CB=N12^{\circ}55'26''E(C)$

CURVE RW10
 $\Delta=25^{\circ}57'19''(C)$
 $\Delta=25^{\circ}57'03''(P)$
 $R=2949.87'(C)$
 $R=2949.79'(P)$
 $L=1336.31'(C)$
 $L=1336.07'(P)$
 $T=679.82'(C)$
 $CD=1324.92'(C)$
 $CB=N12^{\circ}55'26''E(C)$

CURVE RW11
 $\Delta=106^{\circ}57'35''(C)$
 $\Delta=106^{\circ}57'14''(P)$
 $R=50.00'(C)(P)$
 $L=93.34'(C)$
 $L=93.33'(P)$
 $T=67.52'(C)$
 $CD=80.36'(C)$
 $CB=N53^{\circ}32'01''W(C)$

CURVE RW12
 $\Delta=73^{\circ}02'25''(C)$
 $\Delta=73^{\circ}02'46''(P)$
 $R=50.00'(C)(P)$
 $L=63.74'(C)(P)$
 $T=37.03'(C)$
 $CD=59.51'(C)$
 $CB=N36^{\circ}27'59''E(C)$



CURVE 5
 $\Delta=33^{\circ}59'17''(F)$
 $R=2315.99'(F)$
 $L=1373.84'(F)$
 $T=707.80'(F)$
 $CD=1353.79'(F)$
 $CB=N17^{\circ}02'52''W(F)$

COR1
 STA. 78+12.85, 60.00' LT.
 FND 1" I.P.C. "PCP LS 1100"

COR2
 STA. 77+18.47, 60.00' RT.
 FND N.D. "PRM LS 4236"

COR3
 STA. 78+11.47, 60.00' RT.
 FND N.D. "LB 6018"
 (0.07' N, 0.12' E)

COR4
 STA. 78+79.94, 60.00' RT.
 FND N.D. "BLOOMSTER LB 6018"
 (0.22' S, 0.11' E)

COR5
 STA. 79+27.77, 95.41' RT.
 FND 5/8" I.R.C. "GBA LB 5324"
 (0.23' S, 0.12' E)

COR6
 STA. 79+62.77, 210.19' RT.
 FND 5/8" I.R.C. "BLOOMSTER LB 6018"
 (0.20' S, 0.27' E)

LOT 2
 DISTRIBUTION ESMT.
 AROUND FACILITIES
 (O.R.B. 4812, PG. 3367)

BM6
 STA. 83+99.99, 53.78' RT.
 ORANGE COUNTY
 BENCHMARK S1383002
 FND 3 1/2" ALUMINUM ORANGE
 COUNTY CONTROL DISK
 PUBLISHED EL. = 85.523'

SEA WORLD THEME PARK
 P.B. 27, PG. 93-95

P.I. STA. 79+61.40
 N 1480940.0260
 E 509570.2091
 SET 5/8" I.R.C.
 "GEODATA LB 6556"

STA. 80+42.85, 60.00' LT.
 FND 4"x4" C.M. "PRM 1100"
 (0.13' S, 0.10' W)

P.C. STA. 87+66.18
 N 1481744.8057
 E 509569.4543
 SET 5/8" I.R.C.
 "GEODATA LB 6556"

STA. 87+66.18, 60.00' LT.
 FND 5/8" I.R.C. "WITNESS LB 4207"
 (0.59' S, 0.01' E)

INTERNATIONAL DRIVE
 (R/W PER O.R.B. 3807, PG. 1927)

N00°03'13"W 954.71'(F)
 SURVEY INTERNATIONAL DR

N00°03'13"W 656.23'(C) 656.30'(D)(P)

35' UTILITY & LANDSCAPE
 BUFFER EASEMENT PER
 O.R.B. 4149, PG. 4206 (P)

CURVE RW15
 $\Delta=33^{\circ}59'14''(C)$
 $\Delta=33^{\circ}58'34''(D)(P)$
 $R=2255.99'(C)$
 $R=2256.83'(D)(P)$
 $L=1338.23'(C)$
 $L=1338.29'(D)(P)$
 $T=689.45'(C)$
 $CD=1318.69'(C)$
 $CB=N17^{\circ}02'51''E(C)$

CURVE RW16
 $\Delta=33^{\circ}59'17''(C)$
 $\Delta=33^{\circ}58'34''(D)(P)$
 $R=2375.99'(C)$
 $R=2376.83'(D)(P)$
 $L=1409.44'(C)$
 $L=1409.45'(D)(P)$
 $T=726.14'(C)$
 $CD=1388.86'(C)$
 $CB=N17^{\circ}02'52''E(C)$

CURVE RW13
 $\Delta=73^{\circ}02'25''(C)$
 $\Delta=73^{\circ}02'46''(P)$
 $R=50.00'(C)(P)$
 $L=63.74'(C)(P)$
 $T=37.03'(C)$
 $CD=59.51'(C)$
 $CB=N36^{\circ}27'59''E(C)$

CURVE 4
 $\Delta=25^{\circ}57'19''(F)$ $25^{\circ}57'03''(P)$
 $R=2889.87'(F)$ $2889.79'(P)$
 $L=1309.13'(F)$ $1308.87'(P)$
 $T=660.00'(F)$ $665.86'(P)$
 $CD=1297.97'(F)$ $1297.71'(P)$
 $CB=N12^{\circ}55'26''E(F)$

TBM13
 STA. 83+54.80, 149.00' RT.
 SET SQUARE CUT IN CURB INLET
 EL. = 86.61'

STA. 81+09.95, 60.00' RT.
 FND 4"x4" C.M. WITH NAIL NO ID
 (0.13' S, 0.08' W)

STA. 80+62.12, 124.59' RT.
 FND 4"x4" C.M. NO ID
 (0.05' S, 0.16' W)

STA. 80+77.55, 175.18' RT.
 FND 4"x4" C.M. NO ID

SHADOW WOOD
 P.B. 27, PG. 71-72

STORMWATER POND ESMT.
 (O.R.B. 9503, PG. 437)

DISTRIBUTION ESMT.
 AROUND FACILITIES
 (O.R.B. 9727, PG. 3845)

LIFT STATION ACCESS ESMT.
 (O.R.B. 9503, PG. 437)

SEE SHEET 1 FOR GENERAL NOTES, LEGEND & CERTIFICATION

RIGHT OF WAY SURVEY OF INTERNATIONAL DRIVE

DETAIL SHEET

REVISION	BY	DATE

GEODATA CONSULTANTS, INC. SURVEYING & MAPPING 8700 WESTHALL LANE SUITE 100 MARYLAND, FLORIDA 32706 PHONE: (407) 999-3333 FAX: (407) 999-3334	DATE:	SCALE:
	MAR. 28, 2000	1" = 100'
	PROJECT NO. 00-02	SHEET 7
	OF 12	

DRAFT

P.B. 27, PG. 93-95

LOT 1

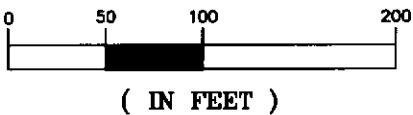
DISTRIBUTION ESMT.
AROUND FACILITIES
(O.R.B. 3914, PG. 545
& O.R.B. 4812, PG. 3387)

EAST LINE OF SECTION 12-24-28
WEST LINE OF SECTION 7-24-29

VALENCIA DRAINAGE DISTRICT
O.R.B. 2593, PG. 1260-1284 (P)

CANAL C-5

GRAPHIC SCALE



SEA WORLD THEME PARK

P.B. 27, PG. 93-95

CURVE RW15
 $\Delta=33^{\circ}59'14''(C)$
 $\Delta=33^{\circ}58'34''(D)(P)$
 $R=2255.99'(C)$
 $R=2256.83'(D)(P)$
 $L=1338.23'(C)$
 $L=1338.29'(D)(P)$
 $T=689.45'(C)$
 $CD=1318.69'(C)$
 $CB=N17^{\circ}02'51''E(C)$

CURVE RW17
 $\Delta=22^{\circ}19'56''(C)(D)(P)$
 $R=370.00'(C)(D)(P)$
 $L=144.22'(C)(P)$
 $L=144.21'(D)$
 $T=73.03'(C)$
 $CD=143.30'(C)$
 $CB=N22^{\circ}52'32''W(C)$

LANDSCAPE ESMT.
AGREEMENT
(O.R.B. 9827, PG. 4998)

STA. 101+40.14 104.75' LT.
FND 1/2" I.R.C. "RLS 1781"
(0.34' S, 0.59' E)

STA. 102+80.73, 77.00' LT.
FND 5/8" I.R.C. NO ID
(0.42' S, 0.65' E)

STA. 101+40.00, 60.00' LT.
FND 4"x4" C.M. NO ID

CURVE RW17
 $S56^{\circ}08'17''W$
 $44.75'(C)(D)(P)$

$N34^{\circ}02'30''W$ 375.00'(C)(D)(P)

$N34^{\circ}02'30''W$ 515.71'(F) 105+00

B SURVEY INTERNATIONAL DR

$N34^{\circ}02'30''W$ 515.71'(C) 515.59'(D)(P)

STA. 101+40.02, 60.00' RT.
FND 5/8" I.R.C. NO ID
(0.18' S, 0.41' E)

TBM16
STA. 102+09.46, 107.00' RT.
SET RR SPIKE IN 20" PINE
EL. = 91.30'

P.T. STA. 101+40.02
N 1483039.1105
E 509172.5676
SET 5/8" I.R.C.
"GEODATA LB 6556"

35' UTILITY & LANDSCAPE
BUFFER EASEMENT PER
O.R.B. 4149, PG. 4206 (P)

TBM15
STA. 96+56.61, 93.69' RT.
SET RR SPIKE IN 16" PINE
EL. = 93.90'

P.O.C. STA. 95+00.00
N 1482466.3026
E 509453.4907
SET 5/8" I.R.C.
"GEODATA LB 6556"

ACCESS & UTILITY ESMT.
(O.R.B. 9823, PG. 7946)

CURVE RW16
 $\Delta=33^{\circ}59'17''(C)$
 $\Delta=33^{\circ}58'34''(D)(P)$
 $R=2375.99'(C)$
 $R=2376.83'(D)(P)$
 $L=1409.44'(C)$
 $L=1409.45'(D)(P)$
 $T=726.14'(C)$
 $CD=1388.86'(C)$
 $CB=N17^{\circ}02'52''E(C)$

BM7
STA. 98+09.92, 54.09' RT.
ORANGE COUNTY
BENCHMARK S1383006
FND 3 1/2" ALUMINUM ORANGE
COUNTY CONTROL DISK
PUBLISHED EL. = 90.838'

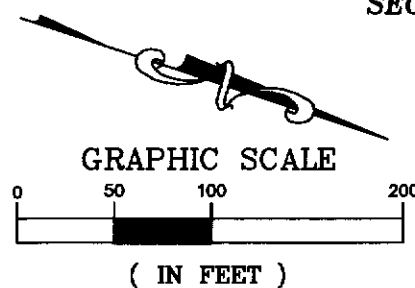
SEE SHEET 7

SEE SHEET 9

REVISION	BY	DATE

	GEODATA CONSULTANTS, INC.	DATE:	SCALE:
	SURVEYING & MAPPING	DATE: 3, 2003	1" = 100'
	8700 WESTRALL LANE	PROJECT NO.	SHEET
	SUITE 157	UC-02	8

SECTION 12, TOWNSHIP 24 SOUTH, RANGE 28 EAST



SEA WORLD THEME PARK
P.B. 27, PG. 93-95

CURVE RW18
Δ=15°56'55"(C)
Δ=15°54'56"(D)(P)
R=1930.15'(C)
R=1935.00'(D)(P)
L=537.27'(C)
L=537.50'(D)(P)
T=270.38'(C)
CD=535.53'(C)
CB=N26°04'02"W(C)

CURVE RW20
Δ=97°35'21"(C)
Δ=97°35'52"(P)
R=35.00'(C)(P)
L=59.61'(C)
L=59.62'(P)
T=39.97'(C)
CD=52.66'(C)
CB=N30°42'06"E(C)

CURVE RW21
Δ=17°50'49"(C)
Δ=17°52'41"(P)
R=1264.84'(C)
R=1263.00'(P)
L=393.98'(C)
L=394.10'(P)
T=198.60'(C)
CD=392.39'(C)
CB=N09°10'11"W(C)

LOT 1

DISTRIBUTION ESMT.
AROUND FACILITIES
(O.R.B. 3874, PG. 845
& O.R.B. 4812, PG. 3387)

DETAIL "B"
NOT TO SCALE

FND 4"x4" C.M. "PRM 926"

1017

DISTRIBUTION ESMT.
AROUND FACILITIES
(O.R.B. 3382, PG. 421)
RECIPROCAL ESMT.
(O.R.B. 3481, PG. 1335)

H B J HEADQUARTERS
P.B. 29, PG. 19-20

TRACT 1

VALENCIA DRAINAGE DISTRICT
O.R.B. 3737, PG. 336 (P)
(AND O.R.B. 3095, PG. 814)

CANAL C-4

STA. 113+91.12, 172.28' LT.
FND 1/2" I.R.C. "LB 3376"

P.I. STA. 114+24.97
N 1484161.4204
E 508555.4754
SET N.D.
"GEODATA LB 6556"

STA. 111+71.56, 77.00' LT.
FND 4"x4" C.M. NO ID
(0.16' N, 0.05' W)

CANAL C-5
VALENCIA DRAINAGE DISTRICT
O.R.B. 2593, PG. 1260-1284 (P)

CURVE RW18
(R/W PER O.R.B. 3807, PG. 1927)

N18°05'35"W 206.87'(C) 207.02'(D)(P)
STA. 113+78.43, 77.00' LT.
FND N.D. "PRM RLS 1781"
(0.06' S, 0.31' W)

ORANGEWOOD
WESTWOOD-UNIT 1
P.B. 5, PG. 132-133

1019

STA. 119+45.42, 60.00' LT.
FND 5/8" I.R.C. "DRMP LB 2848"
(0.05' S, 0.48' E)

STA. 119+15.59
60.00' LT.

INTERNATIONAL DRIVE
(120' R/W PER PLAT)

N18°05'35"W 490.62'(F) 490.37'(P)
S79°29'46"W 25.22'(F)
N18°05'35"W 490.62'(C) 490.37'(P)

CURVE 7
Δ=17°50'49"(F) 17°52'41"(P)
R=1204.84'(F) 1203.00'(P)
L=375.29'(F) 375.38'(P)
T=189.18'(F) 189.23'(P)
CD=373.78'(F) 373.85'(P)
CB=N09°10'11"W(F)

SEE DETAIL "B"

UTILITY LINE ESMT.
(O.R.B. 9532, PG. 1225)

P.C. STA. 119+15.59
N 1484627.7821
E 508403.1073
SET 5/8" I.R.C.
"GEODATA LB 6556"

STA. 119+15.59, 60.00' RT.
FND 5/8" I.R.C. "PBS&J LB 024"
UTILITY ESMT.
(O.R.B. 9532, PG. 3911)

INTERNATIONAL COMMERCIAL CENTER
P.B. 29, PG. 113-114 SEE SHEET 10

P.T. STA. 111+71.56
N 1483928.3089
E 508657.9373
SET N.D.
"GEODATA LB 6556"

P.I. STA. 114+21.64
N 1484166.0182
E 508580.2737
SET N.D.
"GEODATA LB 6556"

TBM18
STA. 113+94.26, 215.84' LT.
SET RR SPIKE IN 14" PALM
EL. = 92.00'

TBM19
STA. 119+78.22, 158.94' LT.
SET N.D. IN ASPHALT, NO ID
EL. = 89.11'

TBM17
STA. 107+81.06, 86.85' RT.
SET RR SPIKE IN 12" PALM
EL. = 95.89'

CURVE 6
Δ=15°56'55"(F)
R=1853.15'(F)
L=515.83'(F)
T=259.60'(F)
CD=514.17'(F)
CB=N26°04'02"W(F)

CURVE RW19
Δ=15°56'55"(C)
Δ=15°54'56"(D)(P)
R=1793.15'(C)
R=1798.00'(D)(P)
L=499.13'(C)
L=499.45'(D)(P)
T=251.19'(C)
CD=497.52'(C)
CB=N26°04'02"W(C)

DISTRIBUTION ESMT.
AROUND FACILITIES
(O.R.B. 8853, PG. 4553)

LOT 1

SHADOW WOOD
P.B. 27, PG. 71-72

SECTION 7, TOWNSHIP 24 SOUTH, RANGE 29 EAST

SEE SHEET 1 FOR GENERAL NOTES, LEGEND & CERTIFICATION

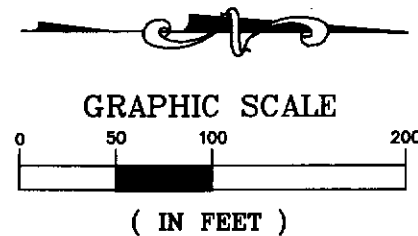
RIGHT OF WAY SURVEY OF INTERNATIONAL DRIVE

DETAIL SHEET

REVISION	BY	DATE

GEODATA CONSULTANTS, INC. DATE: 11/11/02
SURVEYING & MAPPING
8700 WESTBANK LANE
SUITE 187
MAYLAND, FLORIDA 32751
VOICE: (407) 996-8328 FAX: (407) 996-8329

SCALE: 1" = 100'
SHEET 9 OF 12



PARK CENTER
P.B. 9, PG. 62

DISTRIBUTION ESMT.
AROUND FACILITIES
(O.R.B. 3125, PG. 309)
CURVE RW21
Δ=17°50'49"(C)
Δ=17°52'41"(P)
R=1264.84'(C)
R=1263.00'(P)
L=393.98'(C)
L=394.10'(P)
T=198.60'(C)
CD=392.39'(C)
CB=N09°10'11"W(C)

TBM19
STA. 119+78.22, 158.94' LT.
SET N.D. IN ASPHALT, NO ID
EL. = 89.11'
TBM20
STA. 125+70.43, 129.48' LT.
SET RR SPIKE IN 16" PALM
EL. = 92.35'

LOT 1

P.T. STA. 122+90.88
N 1484996.7836
E 508343.5430
SET 5/8" I.R.C.
"GEODATA LB 6556"

STA. 119+45.42, 60.00' LT.
FND 5/8" I.R.C. "DRMP LB 2648"
(0.05' S, 0.48' E)
CURVE RW21
120+00 (120' R/W PER PLAT)
CURVE 7
(25' R/W PER P.B. 29, PG. 113-114)
CURVE RW22
EXIST. R/W

**ORANGEWOOD
WESTWOOD-UNIT 1**
P.B. 5, PG. 132-133

P.C. STA. 119+15.59
N 1484627.7821
E 508403.1073
SET 5/8" I.R.C.
"GEODATA LB 6556"

DISTRIBUTION ESMT.
AROUND FACILITIES
(O.R.B. 4906, PG. 3931)

**INTERNATIONAL
COMMERCIAL CENTER**
P.B. 29, PG. 113-114

SECTION 12, TOWNSHIP 24 SOUTH, RANGE 28 EAST

DETAIL "C"
NOT TO SCALE

STA. 126+66.93, 350.0' LT.
FND 4"x4" C.M. NO ID

P.I. STA. 122+90.88
S89°45'14"W 3.00'(F)
SURVEY INTERNATIONAL DR
P.I. STA. 122+90.88

STA. 126+66.93
267.82' LT.

S86°58'32"E 168.09'(C)(P)
ADDITIONAL R/W PER P.B. 9, PG. 62
LANDSCAPE BUFFER AREAS PER
O.R.B. 3047, PG. 1649-1651 (P)

STA. 122+90.88
366.46'(C) STA. 126+57.34, 100.00' LT.

N00°14'46"W

S89°45'14"W 3.00'(F)

SEE DETAIL "C"

STA. 122+90.88
BEGIN L.A. R/W

EXIST. L.A. R/W

N00°14'46"W

300.00'(C)(R)

STA. 122+90.88

P.I. STA. 122+90.88

N 1484996.7965

E 508346.5429

SET 5/8" I.R.C.

"GEODATA LB 6556"

CURVE RW22

Δ=17°50'49"(C)

R=1119.84'(C)

L=348.82'(C)

T=175.83'(C)

CD=347.41'(C)

CB=N09°10'11"W(C)

BM8

STA. 126+14.15, 114.27' RT.

ORANGE COUNTY

BENCHMARK S1383014

FND 3 1/2" ALUMINUM ORANGE

COUNTY CONTROL DISK

PUBLISHED EL. = 89.616'

20' ORANGE COUNTY
UTILITY EASEMENT
PER O.R.B. 3111, PG.
2278-2280 (P)

WESTWOOD BLVD
(120' R/W PER PLAT)

STATE ROAD 528 RAMP

N88°36'31"E(C)

STA. 127+26.93, 350.02' LT.
FND 1 1/4" I.P.C. NO ID

STA. 127+26.93, 350.05' LT.
FND 1 1/2" I.P.C. "PLS 4548"
(0.06' N, 0.69' E)

**WESTWOOD BOULEVARD
RIGHT OF WAY-PHASE I**
P.B. 10, PG. 69

DISTRIBUTION ESMT.
(O.R.B. 3941, PG. 4012)

DISTRIBUTION ESMT.
(O.R.B. 3941, PG. 4012)

SIGN ESMT.
(O.R.B. 4605, PG. 4753)

P.I. STA. 127+26.93

N 1485432.8460

E 508344.6696

POINT NOT SET

STA. 127+26.93

100.00' LT.

406.02'(C)

902.28'(C)(R)

STA. 131+92.95, 100.00' LT.

FND 4"x4" C.M. NO ID

(0.04' S, 0.30' E)

STA. 127+26.93

100.00' LT.

406.02'(C)

902.28'(C)(R)

STA. 131+92.95, 100.00' LT.

FND 4"x4" C.M. NO ID

(0.04' S, 0.30' E)

STA. 127+26.93

100.00' LT.

406.02'(C)

902.28'(C)(R)

STA. 131+92.95, 100.00' LT.

FND 4"x4" C.M. NO ID

(0.04' S, 0.30' E)

STA. 127+26.93

100.00' LT.

406.02'(C)

902.28'(C)(R)

STA. 131+92.95, 100.00' LT.

FND 4"x4" C.M. NO ID

(0.04' S, 0.30' E)

STA. 127+26.93

100.00' LT.

406.02'(C)

N 1/4 CORNER OF
SECTION 12-24-28
CORNER NOT FOUND

ADDITIONAL ESMT.
INFORMATION IN
O.R.B. 3804, PG. 962
(UNPLOTTABLE)

DISTRIBUTION ESMT.
AROUND FACILITIES
(O.R.B. 3261, PG. 764)

DISTRIBUTION ESMT.
AROUND FACILITIES
(O.R.B. 3941, PG. 4012)

DISTRIBUTION ESMT.
AROUND FACILITIES
(O.R.B. 3941, PG. 4012)

DISTRIBUTION ESMT.
AROUND FACILITIES
(O.R.B. 3941, PG. 4012)

DISTRIBUTION ESMT.
AROUND FACILITIES
(O.R.B. 3941, PG. 4012)

DISTRIBUTION ESMT.
AROUND FACILITIES
(O.R.B. 3941, PG. 4012)

DISTRIBUTION ESMT.
AROUND FACILITIES
(O.R.B. 3941, PG. 4012)

DISTRIBUTION ESMT.
AROUND FACILITIES
(O.R.B. 3941, PG. 4012)

DISTRIBUTION ESMT.
AROUND FACILITIES
(O.R.B. 3941, PG. 4012)

DISTRIBUTION ESMT.
AROUND FACILITIES
(O.R.B. 3941, PG. 4012)

DISTRIBUTION ESMT.
AROUND FACILITIES
(O.R.B. 3941, PG. 4012)

DISTRIBUTION ESMT.
AROUND FACILITIES
(O.R.B. 3941, PG. 4012)

DISTRIBUTION ESMT.
AROUND FACILITIES
(O.R.B. 3941, PG. 4012)

DISTRIBUTION ESMT.
AROUND FACILITIES
(O.R.B. 3941, PG. 4012)

DISTRIBUTION ESMT.
AROUND FACILITIES
(O.R.B. 3941, PG. 4012)

DISTRIBUTION ESMT.
AROUND FACILITIES
(O.R.B. 3941, PG. 4012)

DISTRIBUTION ESMT.
AROUND FACILITIES
(O.R.B. 3941, PG. 4012)

DISTRIBUTION ESMT.
AROUND FACILITIES
(O.R.B. 3941, PG. 4012)

DISTRIBUTION ESMT.
AROUND FACILITIES
(O.R.B. 3941, PG. 4012)

DISTRIBUTION ESMT.
AROUND FACILITIES
(O.R.B. 3941, PG. 4012)

DISTRIBUTION ESMT.
AROUND FACILITIES
(O.R.B. 3941, PG. 4012)

DISTRIBUTION ESMT.
AROUND FACILITIES
(O.R.B. 3941, PG. 4012)

DISTRIBUTION ESMT.
AROUND FACILITIES
(O.R.B. 3941, PG. 4012)

DISTRIBUTION ESMT.
AROUND FACILITIES
(O.R.B. 3941, PG. 4012)

DISTRIBUTION ESMT.
AROUND FACILITIES
(O.R.B. 3941, PG. 4012)

DISTRIBUTION ESMT.
AROUND FACILITIES
(O.R.B. 3941, PG. 4012)

DISTRIBUTION ESMT.
AROUND FACILITIES
(O.R.B. 3941, PG. 4012)

DISTRIBUTION ESMT.
AROUND FACILITIES
(O.R.B. 3941, PG. 4012)

DISTRIBUTION ESMT.
AROUND FACILITIES
(O.R.B. 3941, PG. 4012)

NORTH LINE OF THE
NE 1/4 SECTION 12-24-28
SOUTH LINE OF THE
SE 1/4 SECTION 1-24-28

STA. 131+92.95
100.00' LT.
FND 5/8" I.R. NO ID
FND 4"x4" C.M.
TOP BROKEN
(0.53' N, 0.10' W)

N00°14'46"W

250.00'(F)(R)

FND 5/8" I.R.
NO ID

100'

100'

100'

100'

100'

100'

100'

100'

100'

100'

100'

100'

100'

100'

100'

100'

100'

100'

100'

100'

100'

100'

N89°45'14"E(C)

STA. 131+92.95
100.00' LT.
FND 5/8" I.R. NO ID
FND 4"x4" C.M.
TOP BROKEN
(0.53' N, 0.10' W)

N00°14'46"W

250.00'(F)(R)

FND 5/8" I.R.
NO ID

100'

100'

100'

100'

100'

100'

100'

100'

100'

100'

100'

100'

100'

100'

100'

100'

100'

100'

100'

100'

100'

100'

STATE ROAD 528

STA. 131+92.95
100.00' LT.
FND 5/8" I.R. NO ID
FND 4"x4" C.M.
TOP BROKEN
(0.53' N, 0.10' W)

N00°14'46"W

250.00'(F)(R)

FND 5/8" I.R.
NO ID

100'

100'

100'

100'

100'

100'

100'

100'

100'

100'

100'

100'

100'

100'

100'

100'

100'

100'

100'

100'

100'

100'

EXIST. L.A. R/W

STA. 131+92.95
100.00' LT.
FND 5/8" I.R. NO ID
FND 4"x4" C.M.
TOP BROKEN
(0.53' N, 0.10' W)

N00°14'46"W

250.00'(F)(R)

FND 5/8" I.R.
NO ID

100'

100'

100'

100'

100'

100'

100'

100'

100'

100'

100'

100'

100'

100'

100'

100'

100'

100'

100'

100'

100'

100'

EXIST. L.A. R/W

STA. 131+92.95
100.00' LT.
FND 5/8" I.R. NO ID
FND 4"x4" C.M.
TOP BROKEN
(0.53' N, 0.10' W)

N00°14'46"W

250.00'(F)(R)

FND 5/8" I.R.
NO ID

100'

100'

100'

100'

100'

100'

100'

100'

100'

100'

100'

100'

100'

100'

100'

100'

100'

100'

100'

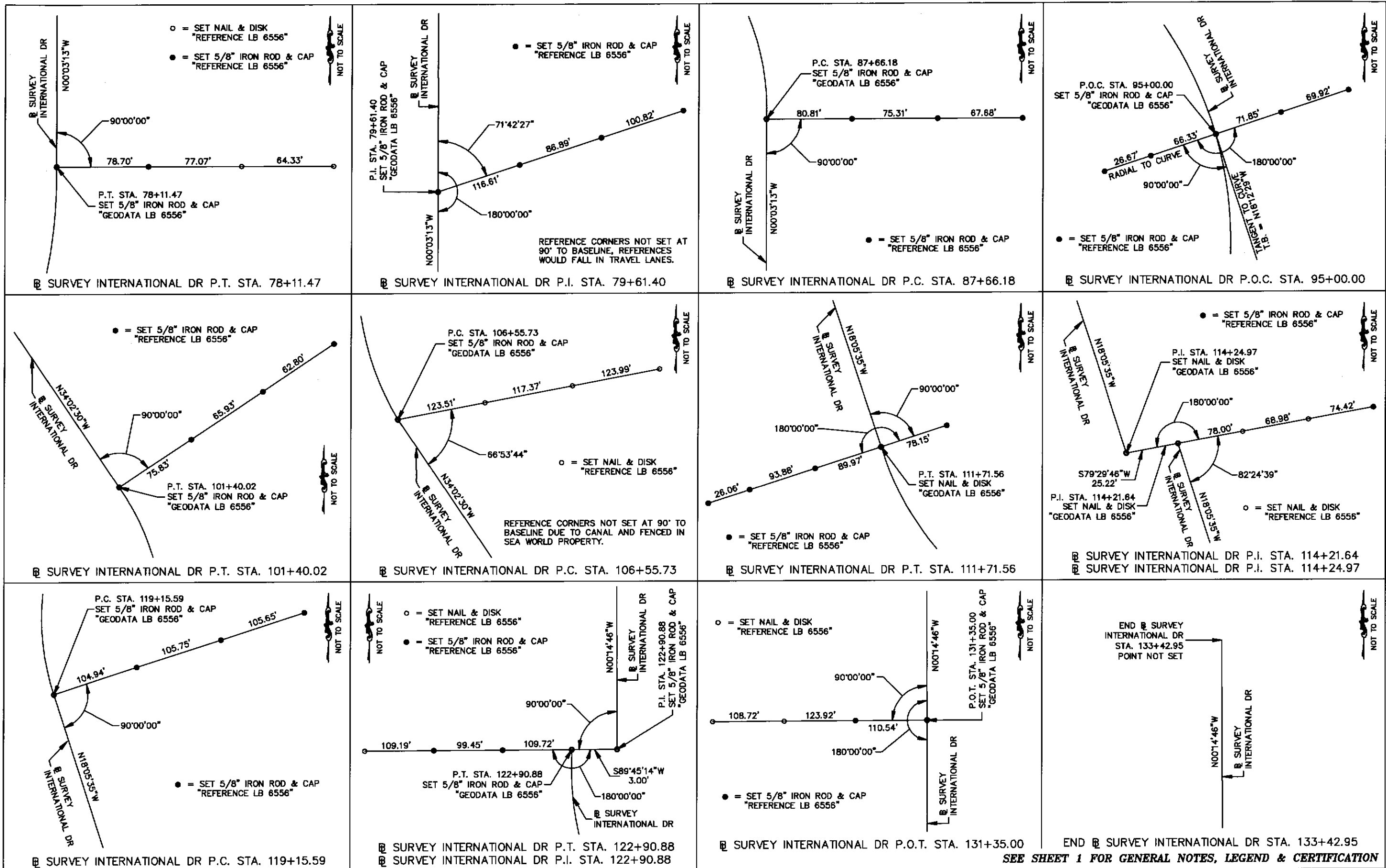
100'

100'

100'

EXIST. L.A. R/W

STA. 131+92.95
100.00' LT.
FND 5/8" I.R. NO ID
FND 4"x4" C.M.<



RIGHT OF WAY SURVEY OF INTERNATIONAL DRIVE

REFERENCE SHEET

REVISION	BY	DATE	GEODATA CONSULTANTS, INC.	DATE	SCALE
			SURVEYING & MAPPING	MAR. 28, 2002	N/A
			2700 WESTHALL LANE		
			SUITE 107		
			MAITLAND, FLORIDA 32751		
			VOICE: (407) 990-8328 FAX: (407) 990-8329	UC-02	SHEET 12 OF 12